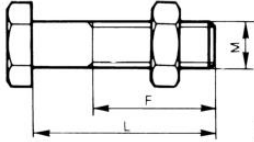




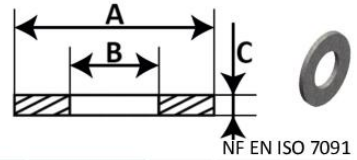
BOULON À TÊTE HEXAGONALE BH



NF EN ISO 4014/4017 + 4032  
CLASSE 5

Référence	Codet	M	L	F	Poids (Kg)
BH1030	68 00 608	10	30	25	0.04
BH1230	68 00 620		30	25	0.07
BH1250	68 00 626		50	30	0.08
BH12100	68 00 634		100	50	0.12
BH12150	68 00 640	12	150	60	0.16
BH12200	68 00 643		200	100	0.20
BH12250	68 00.649		250	100	0.25
BH12300	68 00 655		300	100	0.29
BH1430	68 00 670		30	25	0.09
BH1440	68 00 673		40	30	0.10
BH1450	68 00 676		50	40	0.11
BH14100	68 00 682		100	85	0.16
BH14130	68 00 685		130	50	0.19
BH14150	68 00 688		150	60	0.22
BH14200	68 00 691		200	100	0.27
BH14225	68 00 694		225	100	0.30
BH14250	68 00 697	14	250	100	0.32
BH14275	68 00 700		275	100	0.36
BH14300	68 00 703		300	100	0.38
BH14325	68 00 706		325	100	0.42
BH14350	68 00 709		350	100	0.45
BH14375	68 00 712		375	100	0.48
BH14400	68 00 715		400	100	0.52
BH14450	68 00 718		450	100	0.59
BH14500	68 00 721		500	100	0.62
BH14550	68 00 722		550	100	0.69
BH16200	68 00 743		200	80	0.34
BH16250	68 00 746		250	80	0.44
BH16300	68 00 749	16	300	80	0.52
BH16350	68 00 752		350	80	0.59
BH16400	68 00 755		400	80	0.66
BH20100	-		100	50	0.37
BH20140	68 00 800	20	140	100	0.45
BH20160	68 00 803		160	50	0.51
BH24100	68 00 828		100	50	0.60
BH24140	68 00 830	24	140	60	0.72

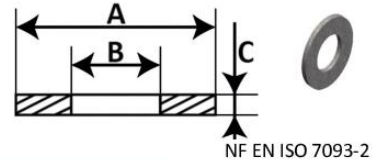
RONDELLE PLATE SÉRIE MOYENNE MG



NF EN ISO 7091

Référence	Codet	A	B	C
MG12	68 03 015	24	13.5	2.5
MG14	68 03 022	28	15.5	2.5
MG16	68 03 039	30	17.5	3
MG18	68 03 044	34	20	3
MG20	68 03 048	37	22	3
MG24	-	44	26	4

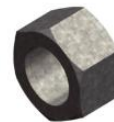
RONDELLE PLATE SÉRIE LARGE LG



NF EN ISO 7093-2

Référence	Codet	A	B	C
LG12	68 03 116	37	13.5	3
LG14	68 03 124	44	15.5	3
LG16	68 03 137	50	17.5	3

ÉCROU E



NF EN ISO 4032

Référence	Codet	Ø	Poids (Kg)
E124	-	12	0.017
E14	-	14	0.026
E16	-	16	0.310
E18	-	18	0.048
E20	-	20	0.066
E24	-	24	0.112

AUTRES DIMENSIONS : NOUS CONSULTER